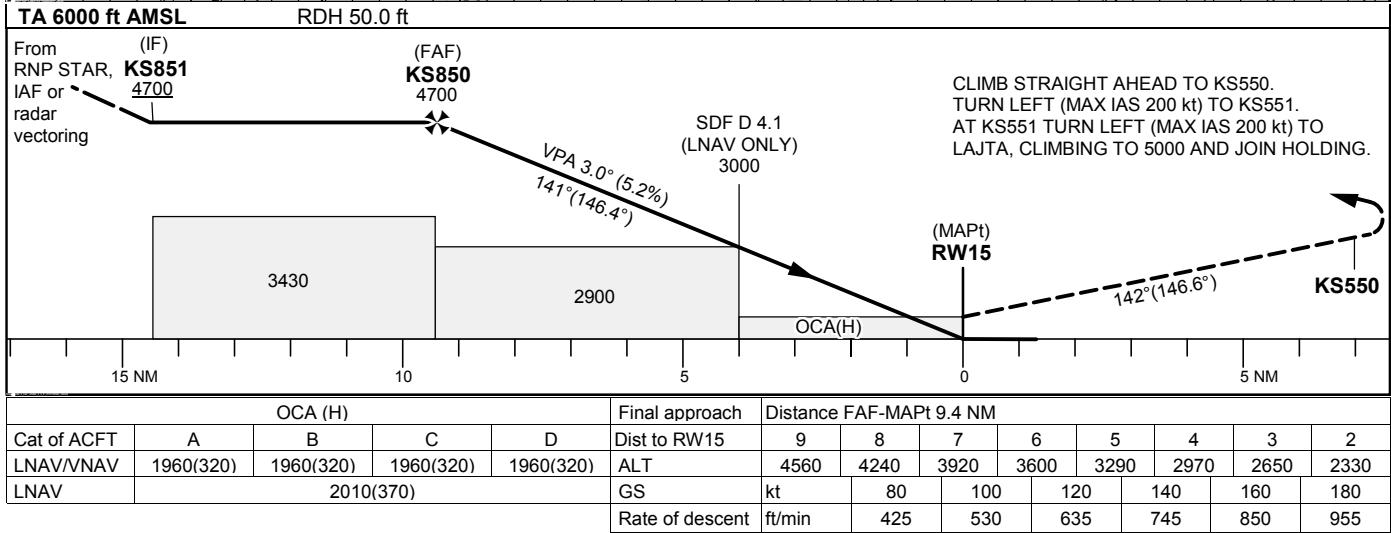
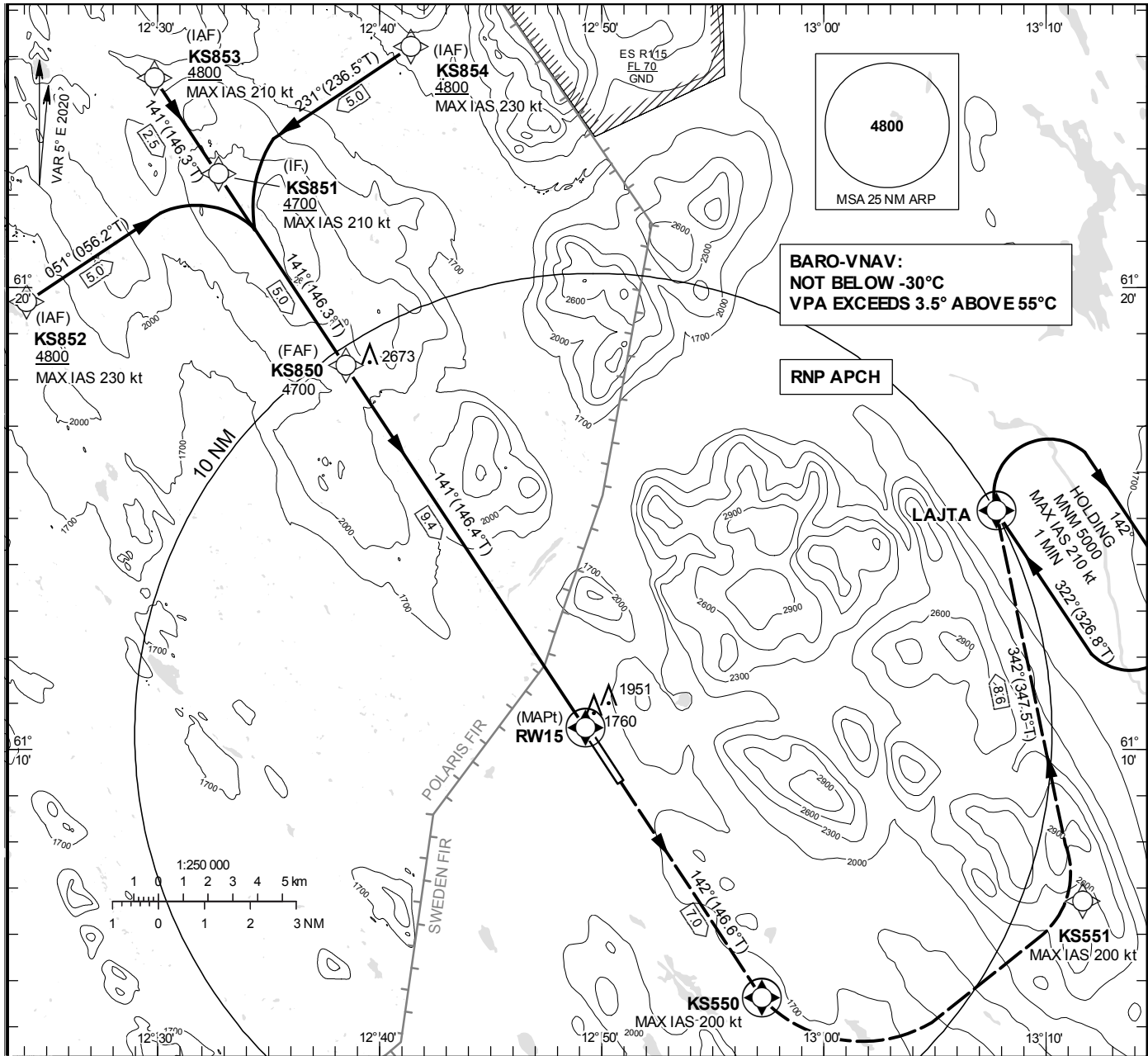


INSTRUMENT APPROACH CHART – ICAO
THR ELEV 1643.8 ft, AD ELEV 1649 ft
OCH are related to THR.
BRG are MAG (True).
ALT, HGT and ELEV in ft.

SÄLEN TOWER 124.460



CHANGE: Editorial

SÄLEN/Scandinavian Mountains**RNP RWY 15 via KS852**

Path Desc	Waypoint Identifier	Fly-over	Course °M(°T)	Dist (NM)	Turn Dir	Altitude	Speed	VPA/ RDH	Rec Navaid	Navigation Specification
IF	KS852	-	-	-	-	+4800	-230	-	-	RNP APCH
TF	KS851	-	051°(056.2°)	5.0	-	+4700	-	-	-	RNP APCH

RNP RWY 15 via KS853

Path Desc	Waypoint Identifier	Fly-over	Course °M(°T)	Dist (NM)	Turn Dir	Altitude	Speed	VPA/ RDH	Rec Navaid	Navigation Specification
IF	KS853	-	-	-	-	+4800	-210	-	-	RNP APCH
TF	KS851	-	141°(146.3°)	2.5	-	+4700	-	-	-	RNP APCH

RNP RWY 15 via KS854

Path Desc	Waypoint Identifier	Fly-over	Course °M(°T)	Dist (NM)	Turn Dir	Altitude	Speed	VPA/ RDH	Rec Navaid	Navigation Specification
IF	KS854	-	-	-	-	+4800	-230	-	-	RNP APCH
TF	KS851	-	231°(236.5°)	5.0	-	+4700	-	-	-	RNP APCH

Path Desc	Waypoint Identifier	Fly-over	Course °M(°T)	Dist (NM)	Turn Dir	Altitude	Speed	VPA/ RDH	Rec Navaid	Navigation Specification
IF	KS851	-	-	-	-	+4700	-210	-	-	RNP APCH
TF	KS850	-	141°(146.3°)	5.0	-	@4700	-	-	-	RNP APCH
TF	RW15	Y	141°(146.4°)	9.4	-	@1694	-	-3.0/50	-	RNP APCH
TF	KS550	Y	142°(146.6°)	7.0	-	-	-200	-	-	RNP APCH
DF	KS551	-	-	-	L	-	-200	-	-	RNP APCH
TF	LAJTA	-	342°(347.5°)	8.6	-	+5000	-200	-	-	RNP APCH

ESKS Holding LAJTA

Path Desc	Waypoint Identifier	Fly-over	Course °M(°T)	Dist (NM)	Turn Dir	Altitude	Speed	VPA/ RDH	Rec Navaid	Navigation Specification
HM	LAJTA	Y	322°(326.8°)	-	R	+5000	-210	-	-	RNP 1